

Elsa Dray Farges
Portfolio 2026

Dessin
Sculpture

Set Design
Installations

19 Nouvelle cité de Tillemont
93100 Montreuil

Elsa Dray - Farges



My work explores the territories of the unconscious, where the real, the imaginary, and the symbolic intertwine. Through my drawings and sculptures, I give shape to "upside-down worlds", capturing those transitional spaces where the boundaries of identity slip and dissolve. In the manner of psychoanalysis, my practice unfolds through free association. I draw from a reservoir of archetypes rooted in fairy tales and art history, from the darkness of Goya's Caprices to the organic vulnerability of Kiki Smith's work. Within these porous landscapes, between dream and nightmare, emerges a disgraced bestiary: chimeras, hybrid crowds, costumed creatures, bodies in the midst of metamorphosis.

This practice moves between drawing and sculpture, in a constant back-and-forth between line and volume. When I draw, I first let the ink flow freely, embracing the accident, before building the image in layers. Modelling then allows my creatures to extract themselves from the page and take on physical form in space. In this passage from paper to matter, I seek a continuity between eye and hand, to carry the aliveness and vibration of a drawn line into the gesture of clay.

Drawing or modelling my fears is not a simple act of representation, but a process of turning the stigma inside out, a rehabilitation of dread. My practice acts as a material spell: by imprisoning my anxieties in matter, it transforms the act of creation into a ritual of protection.

In both practices, colour is central, it does not clothe form, it constitutes it. Its vividness allows for a duality of perception, a tension between attraction and repulsion. I seek a dialogue and direct correspondences between ink and glaze, where mixing, accumulation, and removal produce unexpected associations. These in-between colour states are of particular interest to me: the merging of hues during firing generates unpredictability and movement, contributing to the sensation of metamorphosis in my figures.



Elsa Dray Farges
Portfolio 2026

3

COLLABORATIONS

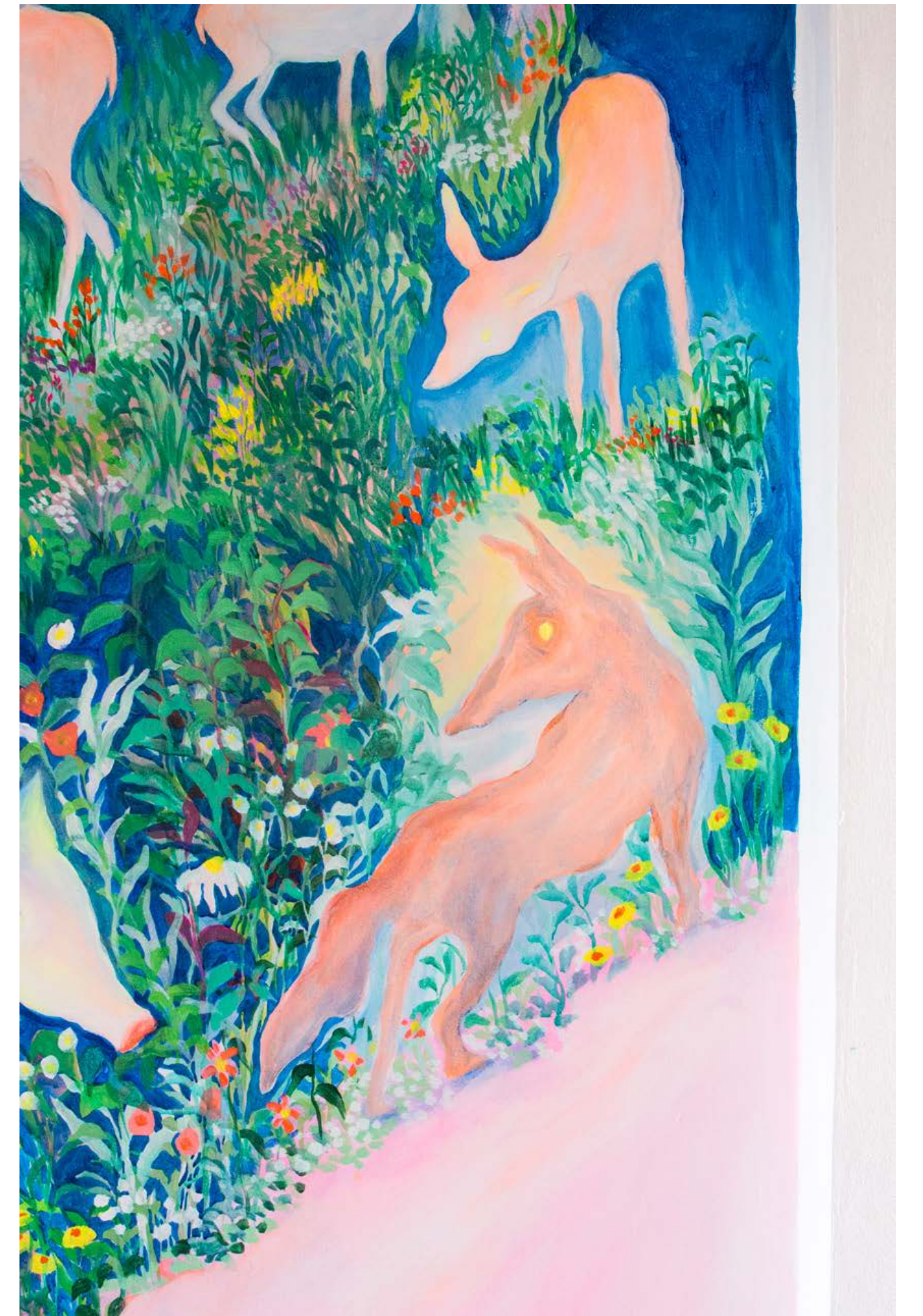


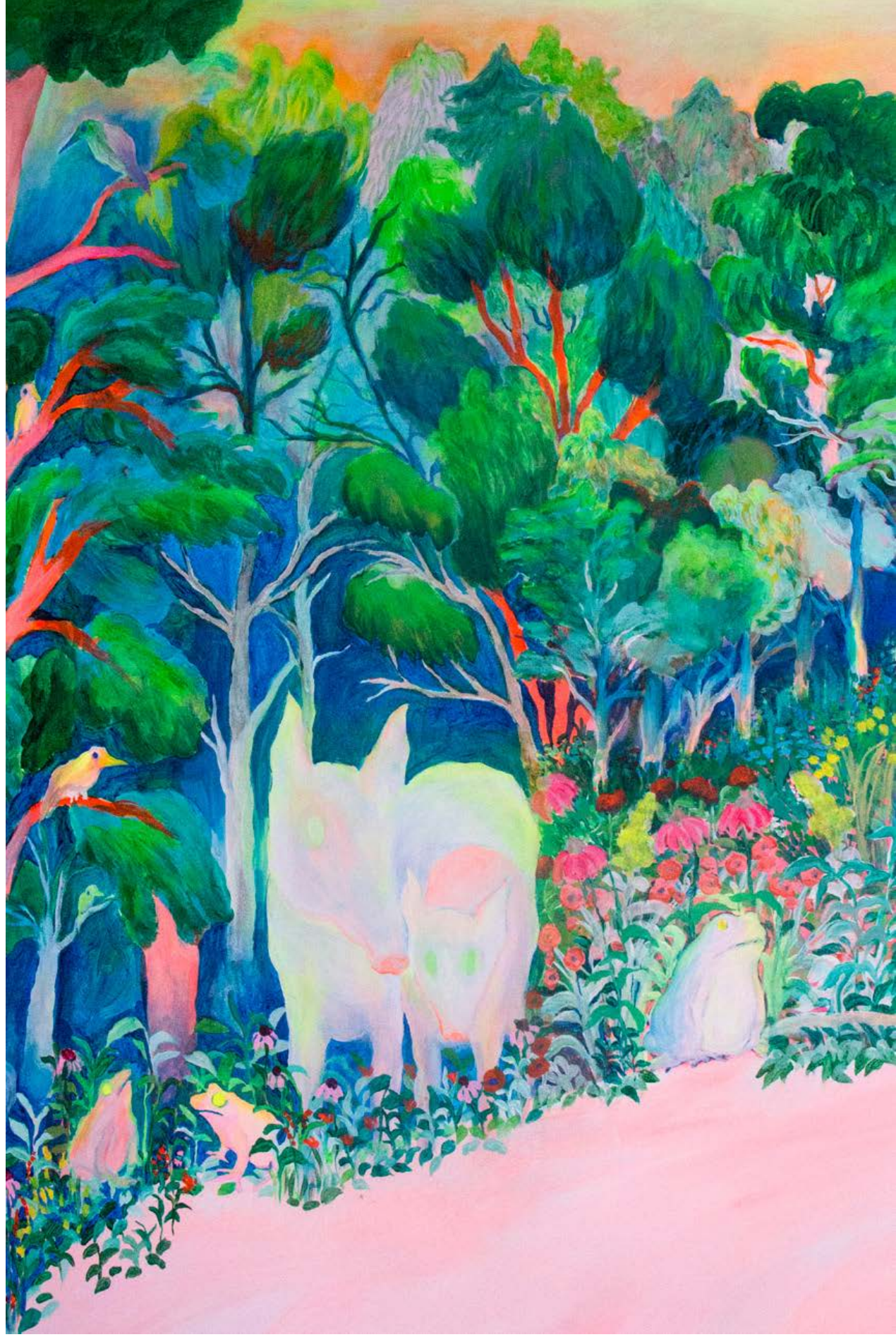
Les Ateliers dans la forêt 2025

4
—

During the summer of 2025, I was selected for a residency at Les Ateliers dans la Forêt, a space founded by ceramicist Rémi Bracquemond and visual artist Alexandre Benjamin Navet. They invited me to paint a mural in their guest room. Cut off from the noise of the city, immersed in the sounds of nature, the movement of animals, the hooting of owls at night, I began to imagine a dense forest navigating between reality and the imaginary. It is with this sensation, both magical and surreal, that I created this fresco: inspired by a nature so close to us and yet remaining mysterious, leaving room for the imagination to roam.

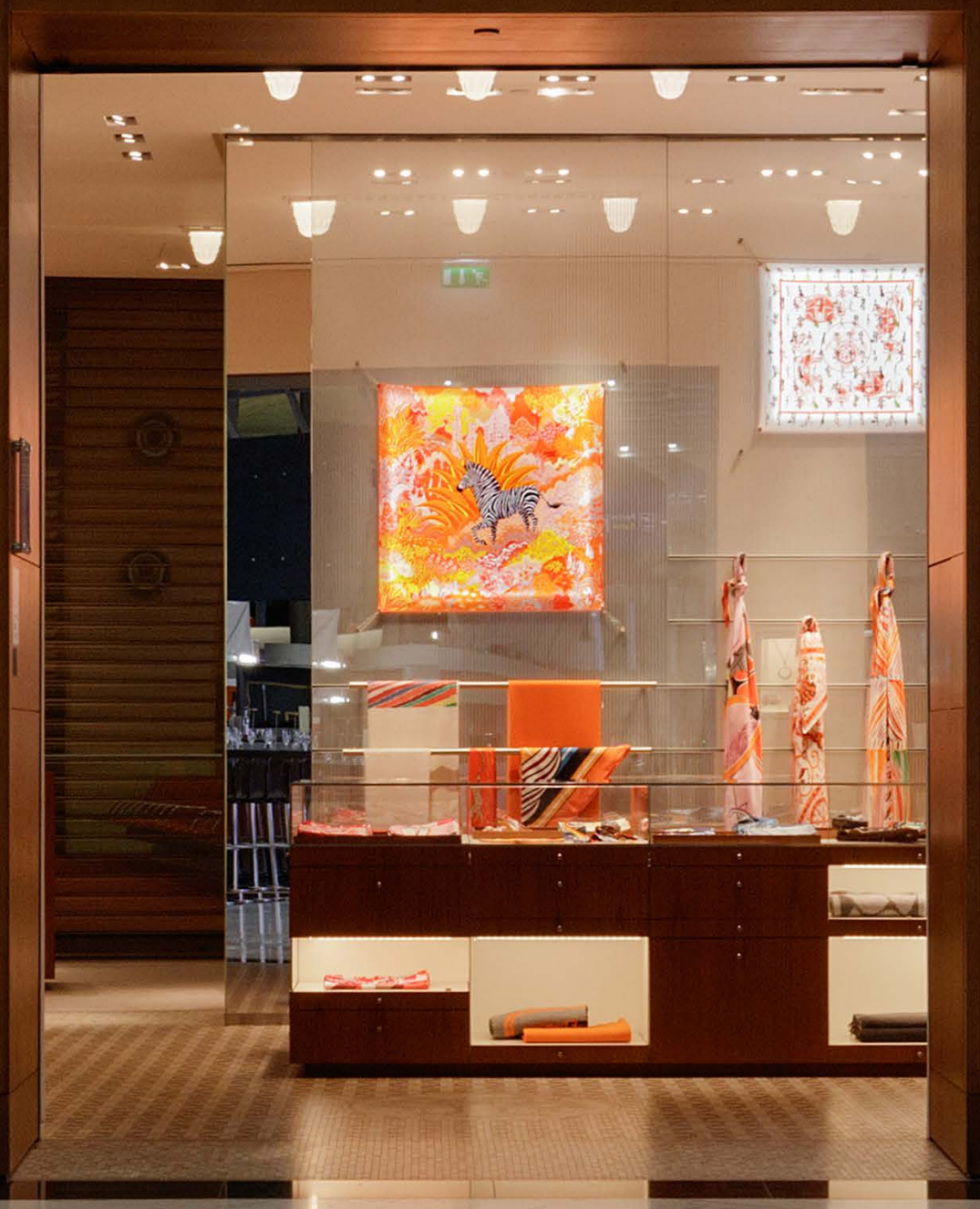








HERMÈS



The theme of this edition was "Dream". I imagined four distinct worlds built around fantasy architectures, each populated by small chimeras wandering from one world to another.

Window displays conceived and produced for the boutiques at Roissy CDG and Istanbul airport.





HERMÈS





Bonpoint
Défilé Hiver 2019-20

13

These papier-mâché costumes are inspired by traditional Alsatian carnival costumes. Bonpoint entrusted me with their reinterpretation and adaptation to a child's scale.



This Antwerp jewellery brand gave carte blanche to five artists to personalise a limited-edition case, in the spirit of the Belgian Surrealists. I imagined papier-mâché creatures, curious about the contents of the box, attempting to lift its lid in secret.







Tressé entrusted me with the three-dimensional adaptation of their drawings. I interpreted and transposed their vision by creating large-scale sculptures that capture the spirit and spontaneity of the original line work. These three papier-mâché sculptures were displayed in the windows of their boutique on the Rue des Rosiers, Paris, in May and September 2024.







Tressé
2024



OEUVRES PERSONNELLES



Figure à la meute
2025

Faïence émaillée
35 x 29 x 25 cm



Le rêve de l'âne
2025

22

—

Grès émaillé
40 x 39 x 25 cm





Exhibition "Liminal"
Curation by Gabrielle Petiau

23

Espace Noemi Brownstone
2026, Paris

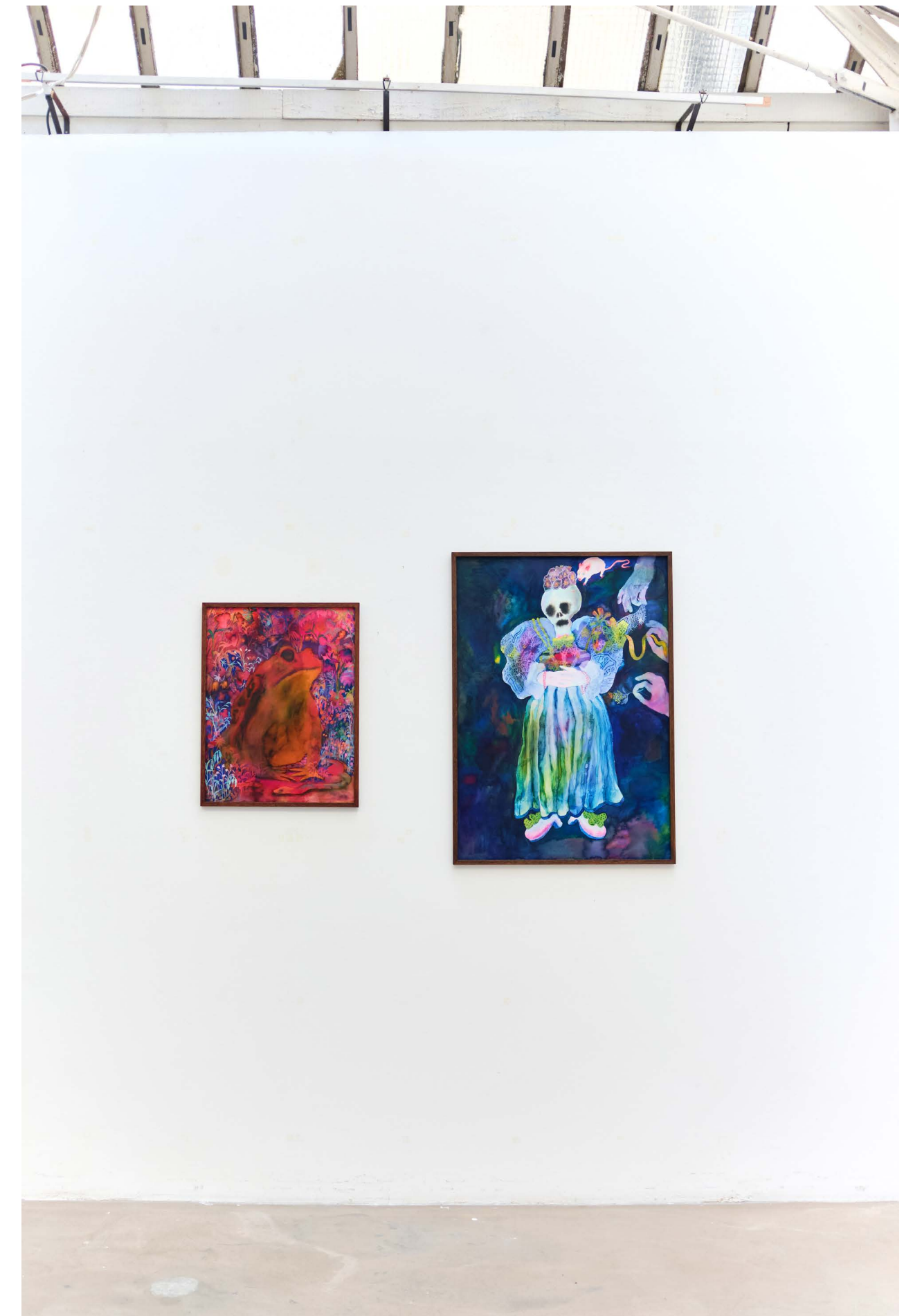




←Crapaud
↳Collective exhibition "Liminal"

024
—

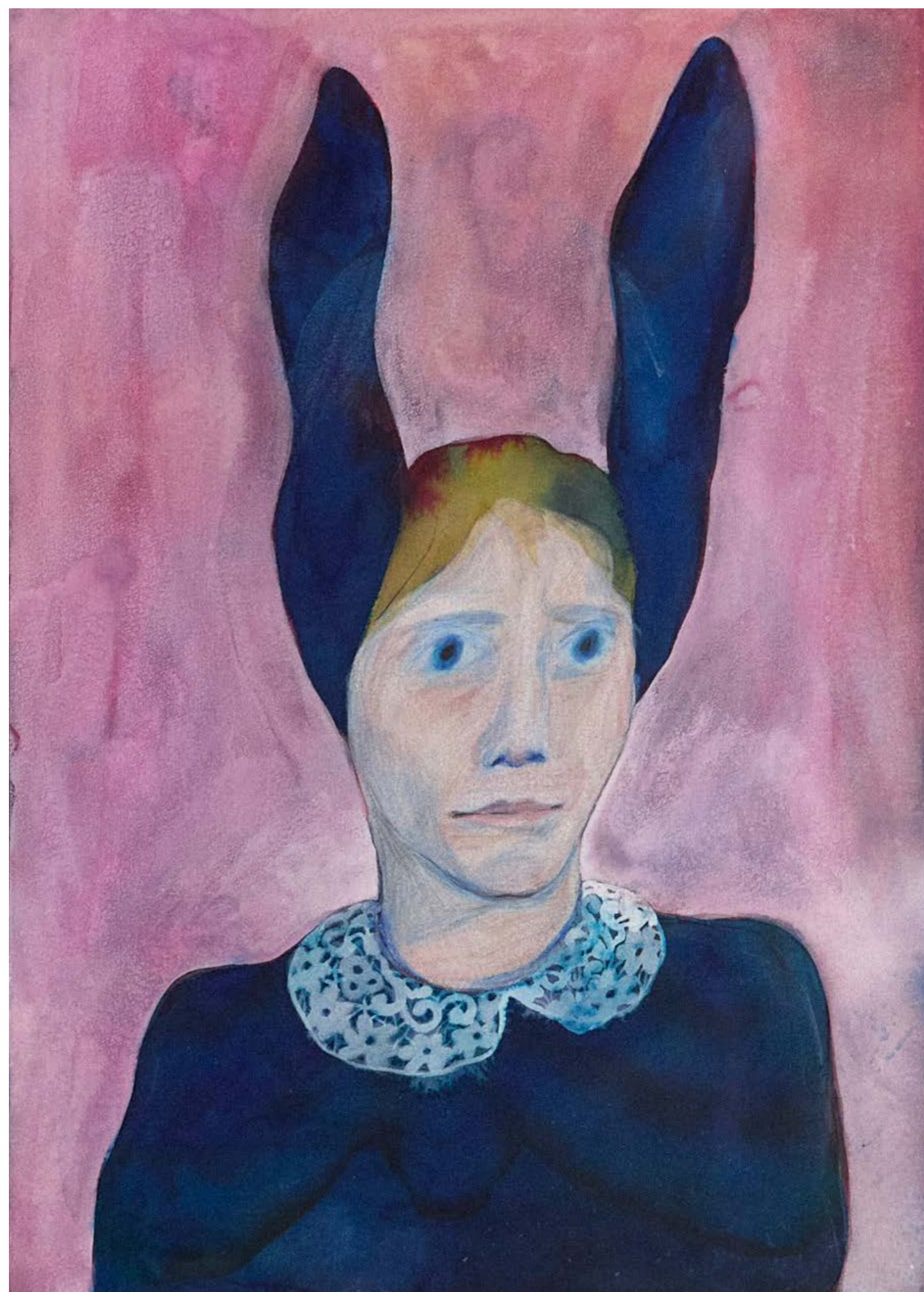
Encre et gouache sur papier, 2025
65 x 50 cm



→Garçon au chapeau
↳ Pinocchio

025

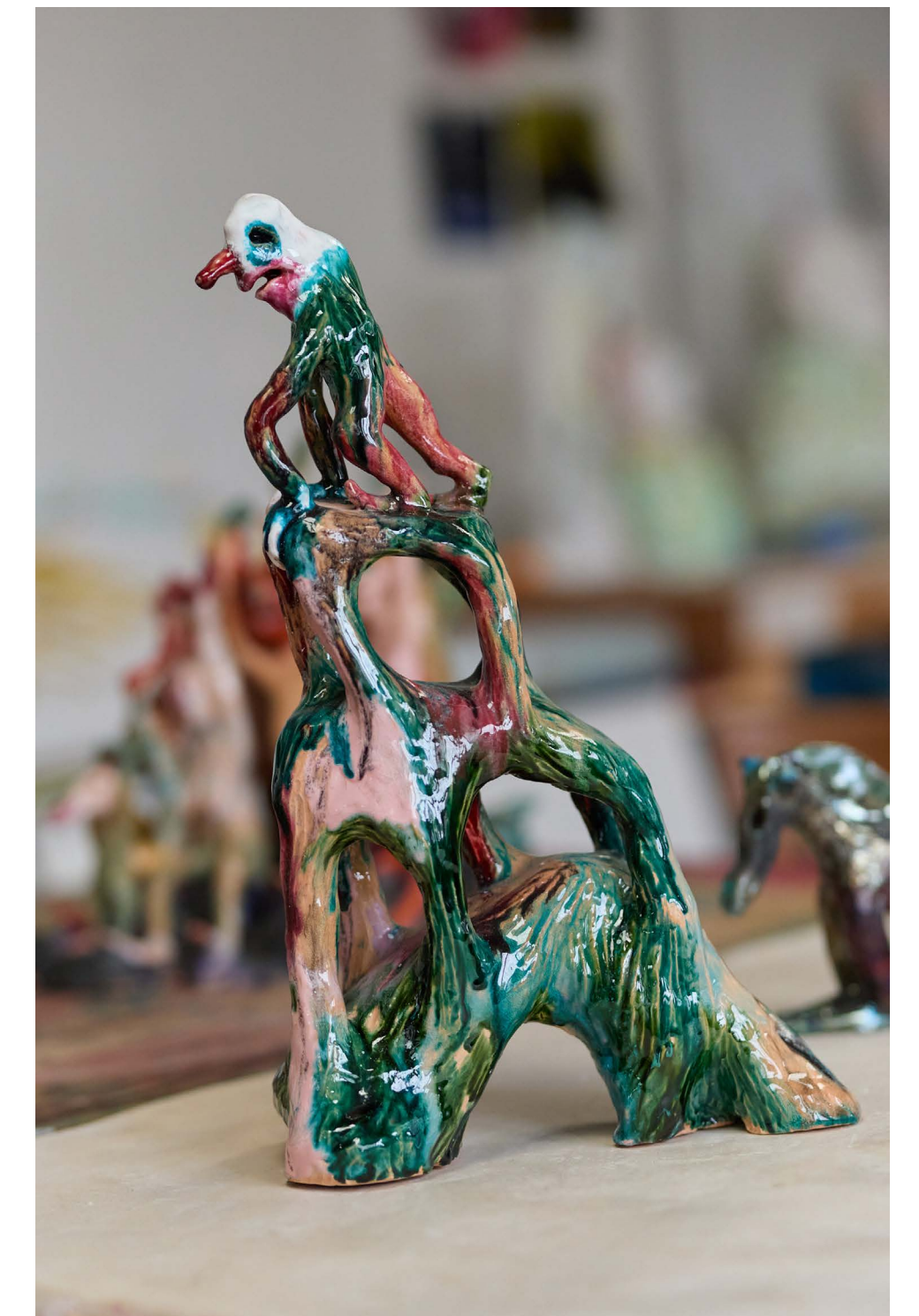
2026
Encre, gouache et crayon de couleur sur papier
42 x 29,7 cm



L'Ascension
2025

Faïence émaillée
43 x 26 x 14 cm

26



Chimère 3
2024

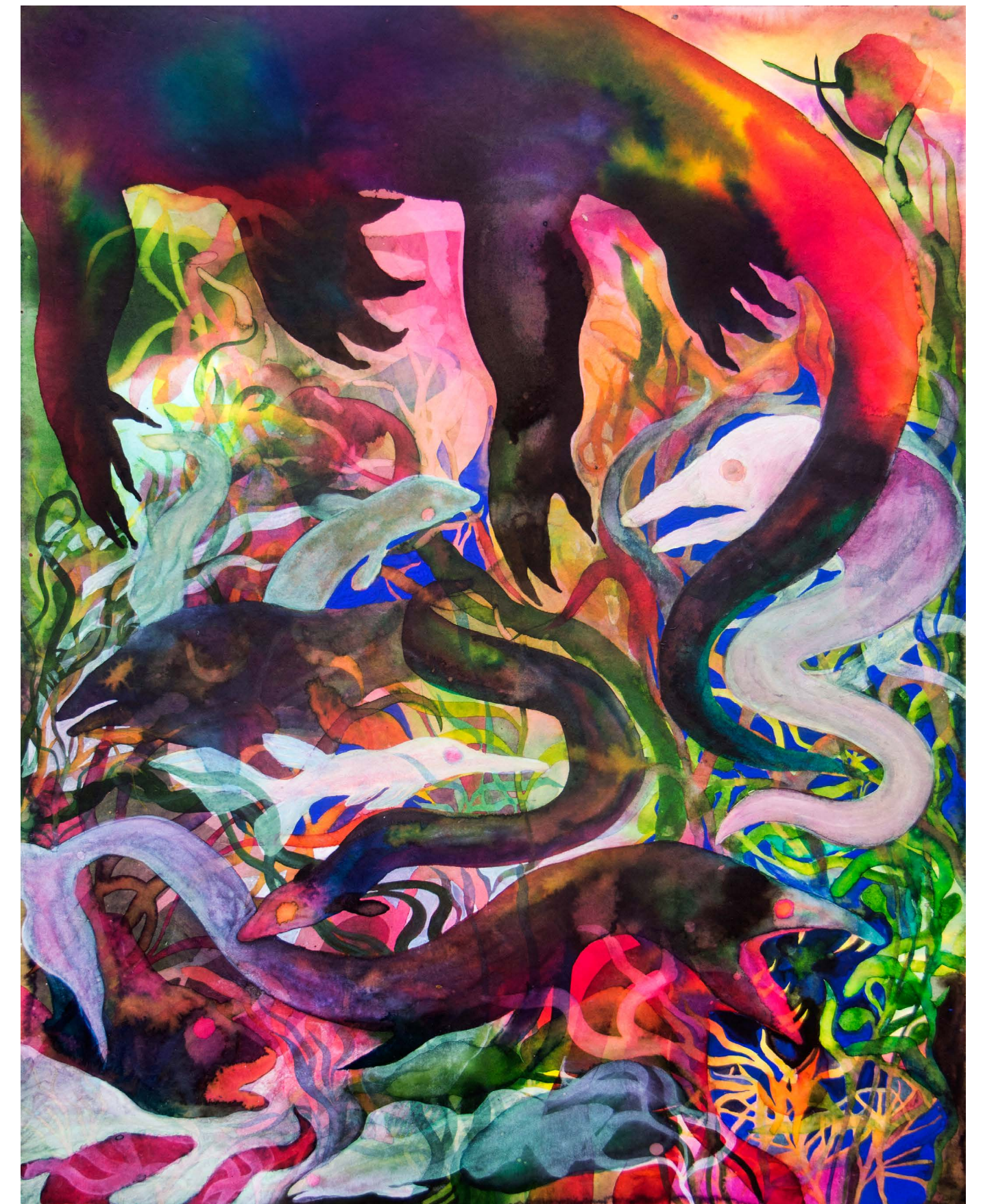
Faïence émaillée
35 x 29 x 25 cm





← Oiseau
↘ Swamp

← Encre et gouache sur papier, 2025
65 x 50 cm
↘ Encre et gouache sur papier, 2025
65 x 50 cm



Petite messe
2025

Faïence émaillée
34 x 39 x 21 cm

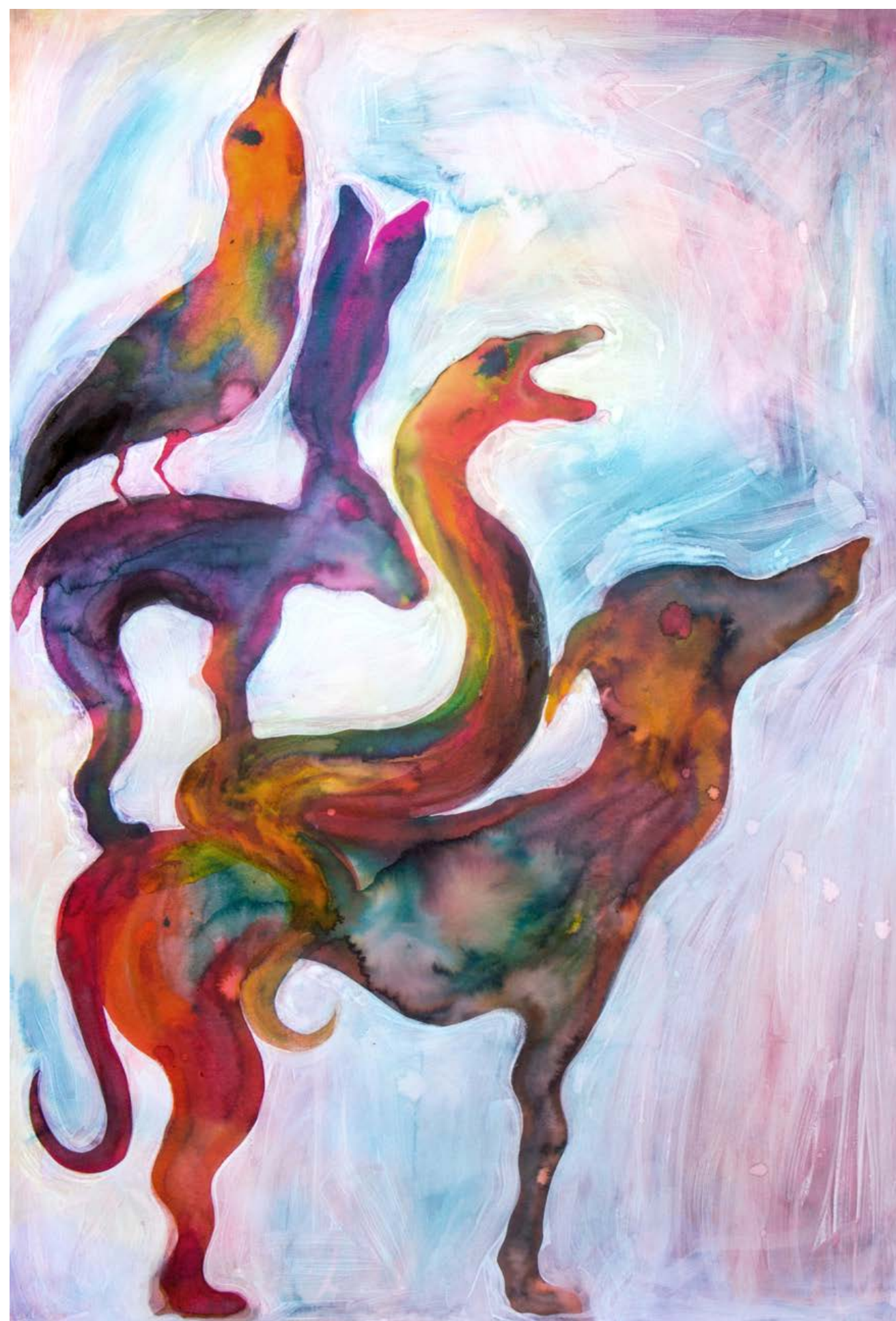




← Bestiaire 1
↳ Bestiaire 2

031

← Encre et gouache sur papier, 2025
110 x 75 cm
↳ Encre et gouache sur papier, 2025
110 x 75 cm

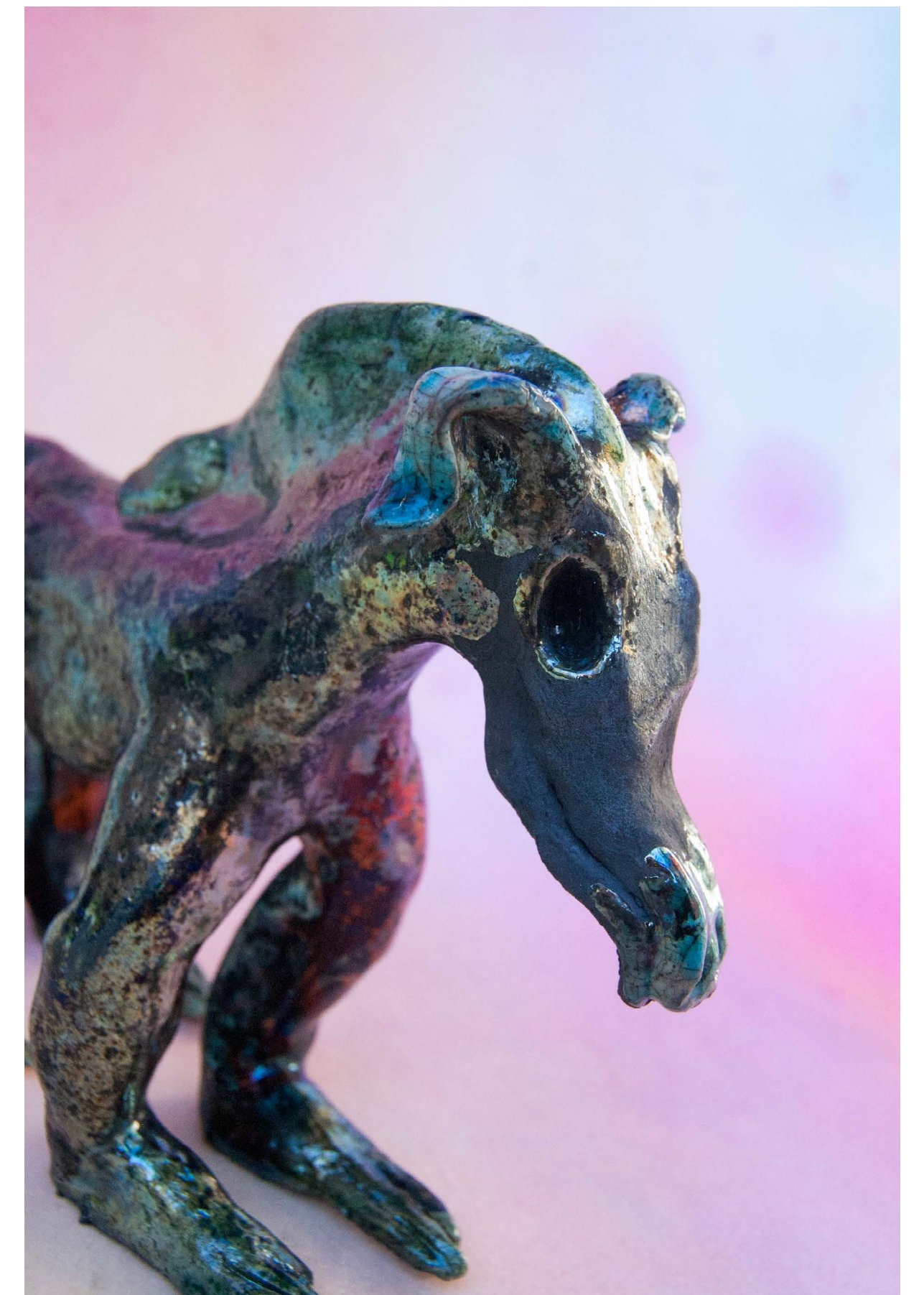




Cheval
2024

Terre et cuisson raku
15 x 19 x 7 cm

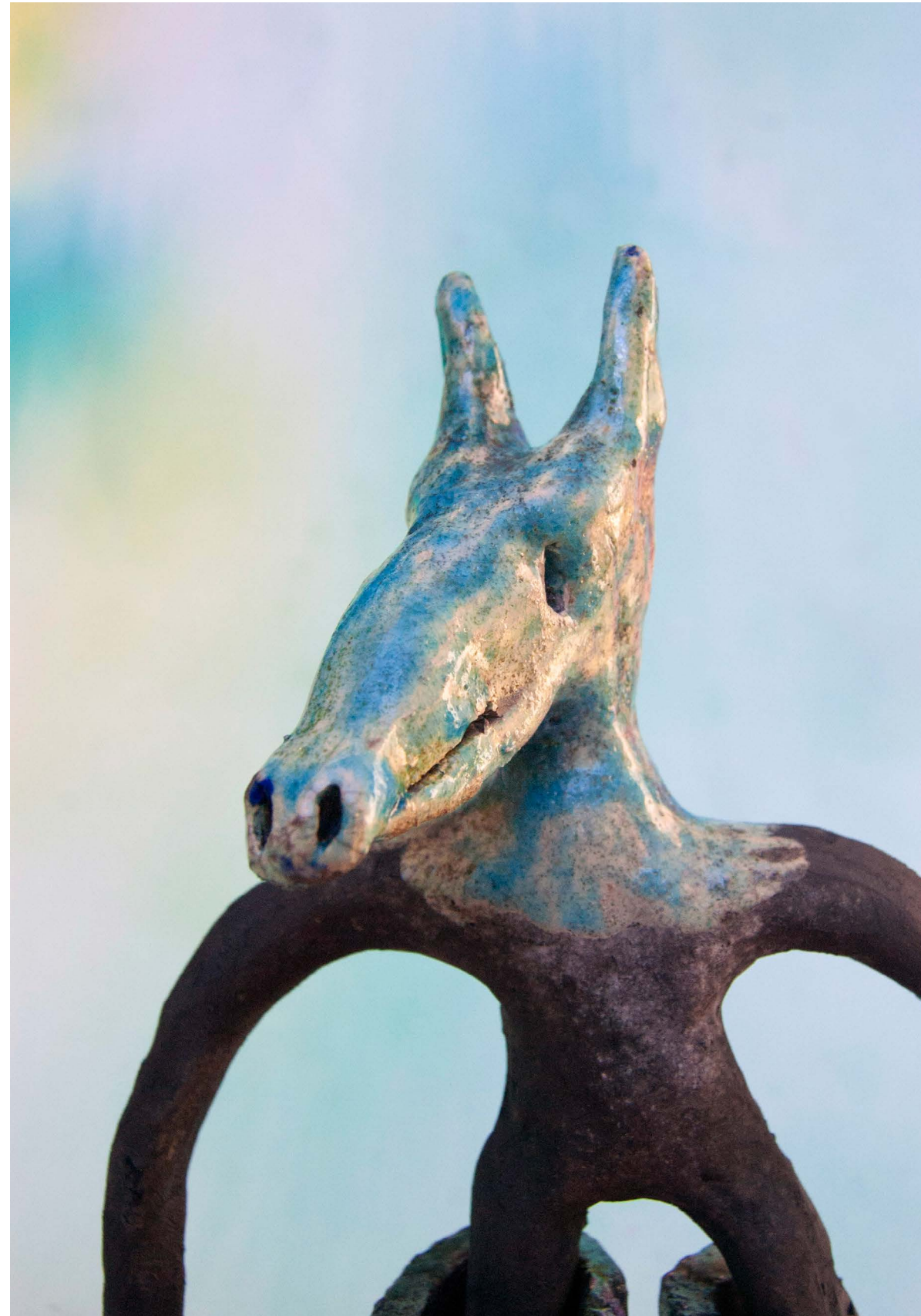
32



Big hand horse
2024

33
—

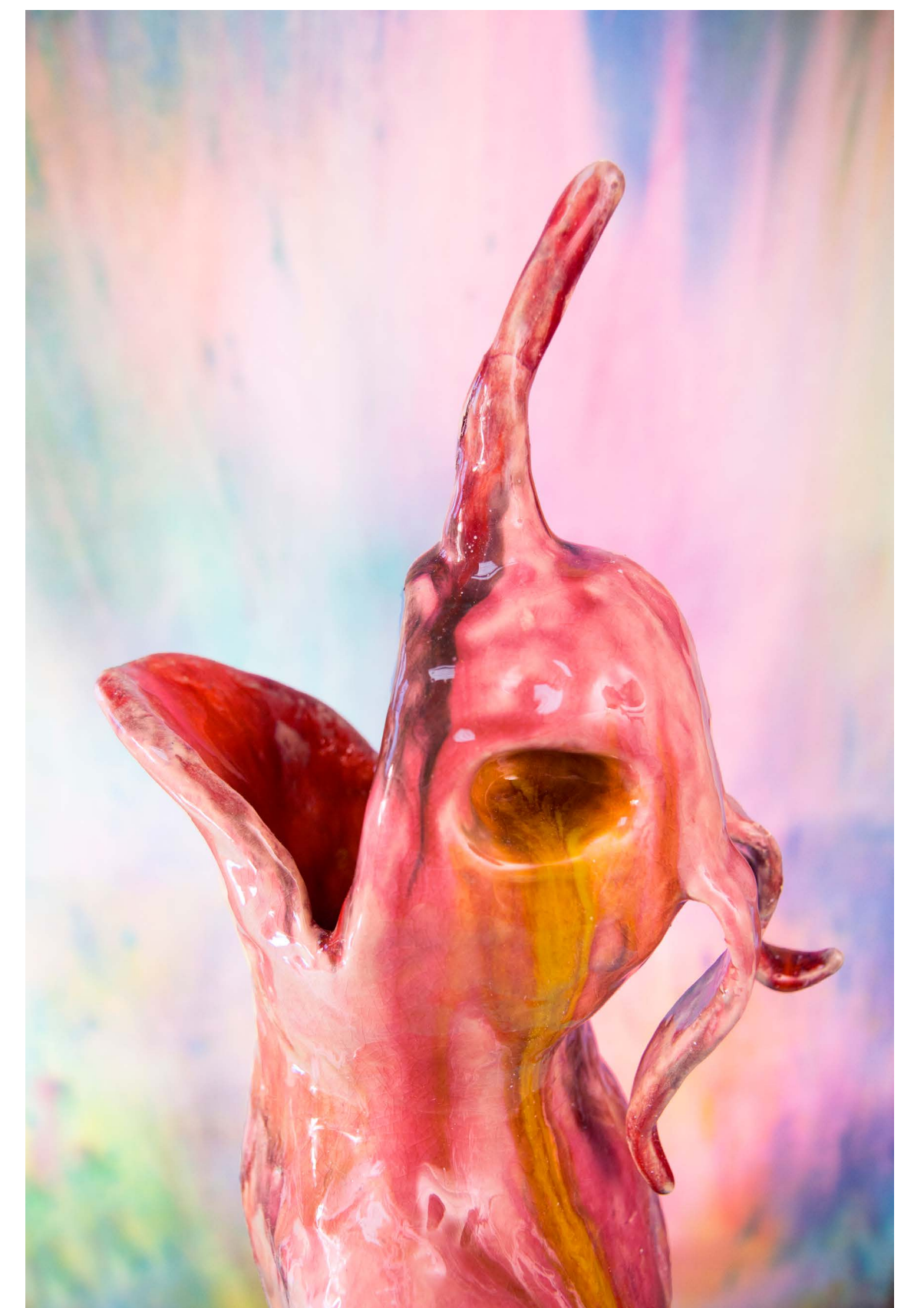
Terre et cuisson raku
32 x 30 x 5 cm





Chimère 4
2024

Faïence émaillée
40 x 23 x 5 cm



Swamp girl
2024

Encre et gouache sur papier
110 x 75 cm

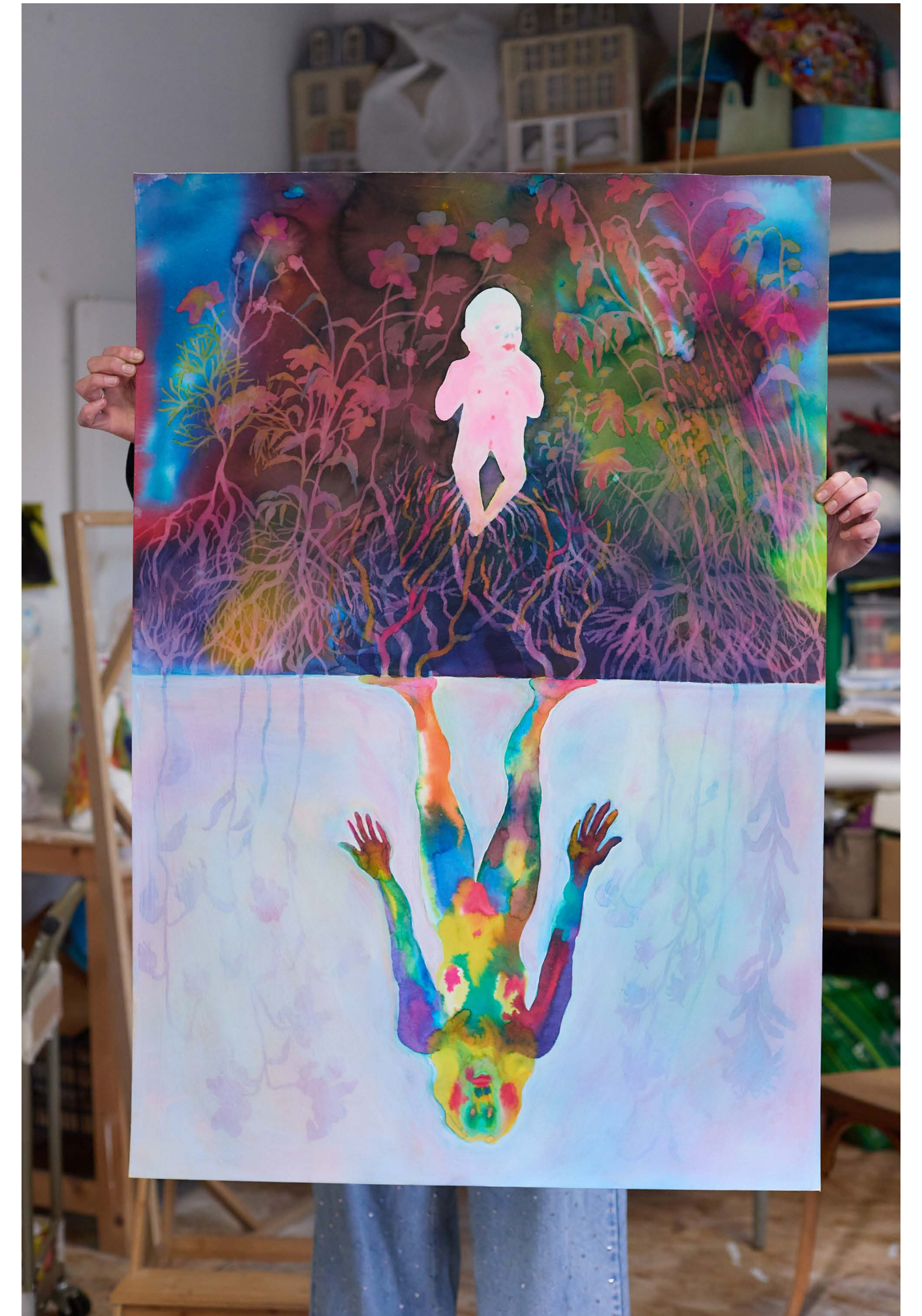




← Soir
↳ Birth

036

← Encre et gouache sur papier, 2025
100 x 70 cm
↳ Encre et gouache sur papier, 2024
110 x 75 cm



Chimère 2
2024

Faïence émaillée
54 x 27 x 17 cm

37

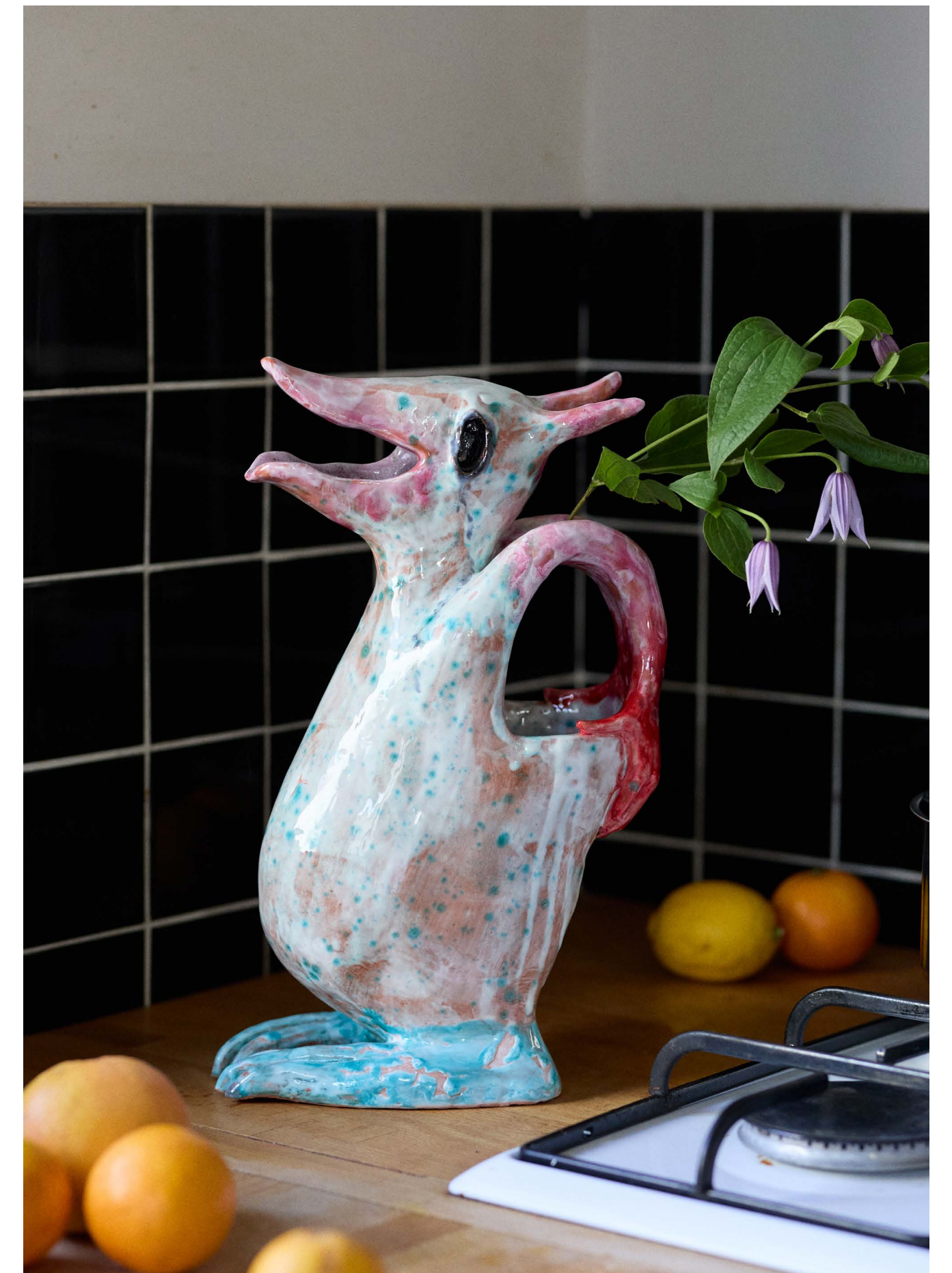
—



Chimère 1
2025

Faïence émaillée
36 x 24 x 11 cm

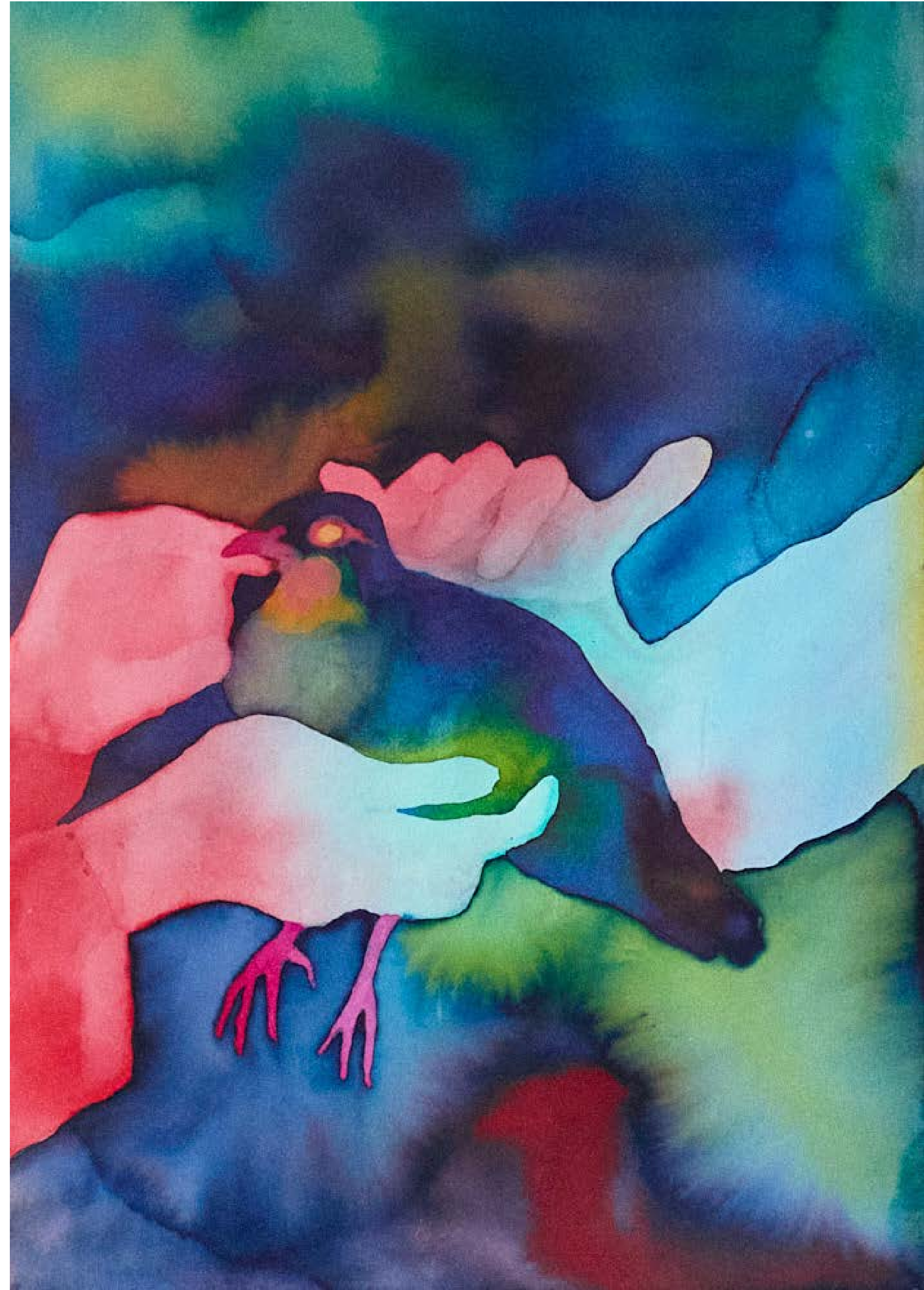
38



→ Caille
↳ Pigeon
2026

Encre et gouache sur papier
42 x 29,7 cm

039



Chat
2026

Faïence émaillée
25 x 15 x 14 cm

40



Chien
2026

Faïence émaillée
24 x 30 x 18 cm

41

—



→ Chimère 6
↘ Chimère 5

→ Faïence émaillée
157 x 55 x 38 cm, 2025

↘ Grès émaillé
70 x 38 x 38 cm, 2026

42





EXHIBITIONS

2026

Collective exhibition « Liminal » during the Art Month. Espace Noémi Brownstone. Curation by Gabrielle Petiau, Paris, FR

2025

Galerie Cinéma, exhibition of murals and drawings from the film "Bonjour l'Asile" by Judith Davis, Paris, FR

Fair trade Playtime, Paris, FR

2024

La Ferme du Buisson, exhibition of murals and panel discussion around the film "Bonjour l'Asile" by Judith Davis, FR

2022

Quintal, collective exhibition « Le Bouquet », FR

Anyway Galerie, Bordeaux, FR

2019

Artazart, Paris, FR

GRANT

2025

ADAGP, grant for the photography of 2D artworks.

RESIDENCY

2025

Residency at Les Ateliers dans la Forêt, Boismorand, Loiret : one month focused on ceramics and the creation of an in situ mural.

COLLABORATIONS

2025

"Bonjour l'Asile" : original drawings and creation of murals for the opening credits of Judith Davis's feature film.

2024

Tressé : creation of sculptures for the brand's window displays in Paris and Saint-Tropez.

2022

Wouters & Hendrix : original sculptures for Antwerpen boutique, BEL.

Verwicht : sculptures for a photoshoot from the luxury bag Verwicht.

2021—aujourd'hui

Bonpoint : animal's masks for boutique's worldwide

2021

Schiaparelli : Research and design of a horse costume for the online show.

2020

Hermès : Creation of the window displays for Roissy Charles-de-Gaulle airport.

Le Printemps Haussmann : Sculptures for the scenography of the window displays and the store.

TEACHING AND JURYS

2014—today

Ecole des Gobelins
ENSAAMA
Greta CDMA
LISAA graphisme
ENSCI
Chanel VM (In-house training)
AMFI (Fashion school of Amsterdam)

TRAINING

2007—2009

Gerrit Rietveld Academie, Amsterdam, graduated from the Textile Design department (Bachelor). Nominated for the Rietveld Prize in the design section. Distinction awarded for graduation projects, NL

2003—2006

ENSAAMA, graduated from the Textile and Environmental Design department (Advanced Vocational Certificate), Paris, FR

ELSA DRAY-FARGES

—
elsadrayfarges@gmail.com

www.elsadray-farges.com

+33 (0)6 51 82 26 02

INSTA : @elsadrayfarges

ATELIER

—
19 Nouvelle cité de Tillemont

93100 Montreuil

Merçi

